

## ASX RELEASE

25 June 2007

**MONTEZUMA**  
MINING COMPANY LTD

PO Box 8535 Perth BC WA 6849

info@montezumamining.com.au

www.montezumamining.com.au

ABN 46 119 711 929

### MONTEZUMA IDENTIFIES CONSISTENT STRONG GOLD ANOMALISM UP TO 233 PPB OVER A STRIKE LENGTH OF 1.9 KM AT THE TALGA PROJECT

- Two convergent gold soil anomalies defined over strike lengths of 1.9km and 1.3km respectively.
- The highest consistent values occur at the intersection of the two anomalies with consistently elevated assay results up to 188 ppb Au.
- The anomalism is associated with the contact between the Archean volcanics and metasediments and a later stage granitic intrusive.
- Approximately 5km of strike of the main prospective corridor remains untested.
- Montezuma intends to drill test the anomalies as soon as practicable.

Montezuma is pleased to announce encouraging gold in soil results from the Talga Project in the east Pilbara region. Recent sampling on a 200 X 25m spacing over an initial 8 km<sup>2</sup> section of tenement E45/2680 has returned highly encouraging gold results with the programme defining two coherent intersecting gold anomalies with a peak value of 306 ppb. Regional background gold levels are less than 5 ppb.

The anomalism overlies a portion of a prospective corridor covering some 15km of strike between the Talga Talga gold mining centre to the immediate west of Montezuma's ground and the high grade drill intercepts announced by Mining Projects Group Ltd from work to the immediate east of the tenement, including 7m @ 3.78 g/t Au from surface.

Montezuma's lease covers some 10 km of strike over this mineralised corridor of which the current



programme has tested approximately half. Follow up soils are planned to test the remaining ground within this corridor and results will be announced as they become available.

A geological review of the results indicates that the strongest anomalism is associated with the contact between the Archean volcanic and sedimentary stratigraphy and a later granite intrusive. Montezuma believes this to be a very encouraging geological setting with the potential for large scale mineralisation and Montezuma intends to drill-test these encouraging new targets as soon as practicable.

The attached diagram shows the position, scale and tenor of the anomalism. The exact timing of the follow up work will depend on when the Callawa copper project is granted, as it is our current intention to test the gold anomalism at Talga and the high grade copper mineralisation at Callawa as part of the same programme. Previous sampling at Callawa returned copper assays up to 29% and the tenement is expected to be granted in the next few weeks paving the way for the immediate commencement of follow up drill testing of these exciting initial results.

The Talga Project comprises a single exploration licence E45/2680 covering 224 km<sup>2</sup> located approximately 23 km east-north-east of Marble Bar in Western Australia. Montezuma holds a 90% beneficial interest in the tenement excluding tin, tantalum and lithium.

**Justin Brown**

**Managing Director**

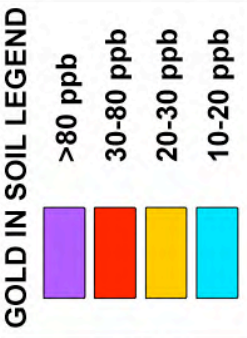
Montezuma Mining Company Ltd

Ph +61 8 9228 4833

*The Information in this report that relates to exploration results is based on information compiled by Liam Cornelius, who is a member of the Australian Institute of Geoscientists. Mr Cornelius is a geologist and has sufficient experience which is relevant to the style of mineralisation and type of deposit under consideration and to the activity which he is undertaking to qualify as a Competent Person as defined in the 2004 Edition of the "Australian Code for Reporting of Exploration Results, Mineral Resources and Ore Reserves. Liam Cornelius is an Executive Officer of South Boulder Mines Ltd and consents to the inclusion in the report of the matters based on his information in the form and context in which it appears.*

7681000 mN 7680500 mN 7680000 mN 7679500 mN 7679000 mN 7678500 mN

802500 mE 803000 mE 803500 mE 804000 mE 804500 mE 805000 mE 805500 mE 806000 mE 806500 mE

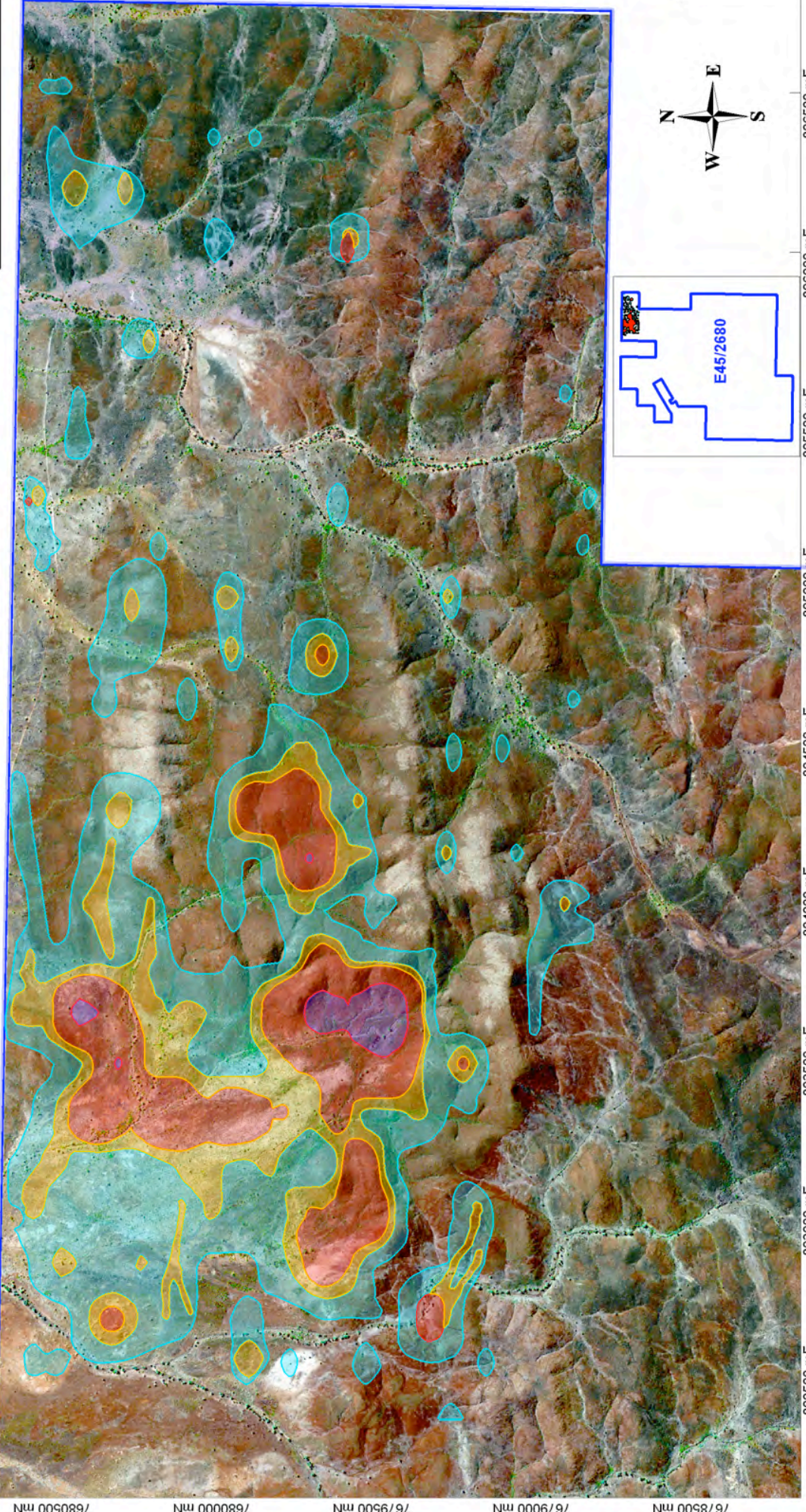


**TALGA SOIL SAMPLING  
GOLD PPB CONTOURS**

**MONTEZUMA MINING COMPANY LTD**

EAST PILBARA PROJECT  
E45/2680  
TALGA PROSPECT  
SOIL SAMPLING

Drawn: 13/08/02  
Scale: 1:1000  
Client: MIMCO  
Author: S. JONES  
Date: 20/04/02



802500 mE 803000 mE 803500 mE 804000 mE 804500 mE 805000 mE 805500 mE 806000 mE 806500 mE

7681000 mN 7680500 mN 7680000 mN 7679500 mN 7679000 mN 7678500 mN